

DCM-300 Modem with Correction Services and the CFX-750™ Display

Quick Reference Card

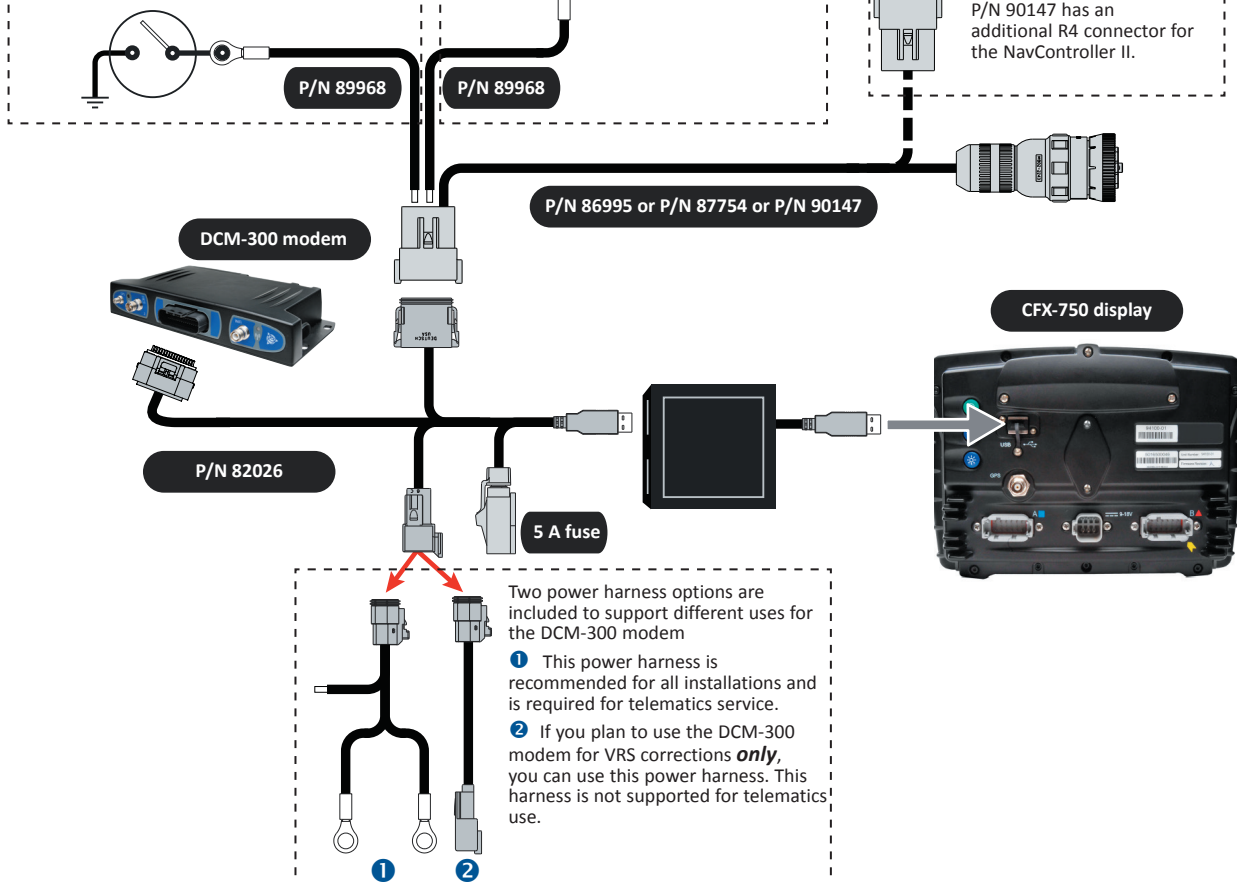
The CFX-750™ display must have firmware version 1.05 or higher installed for use with the DCM-300 modem.

Optional - Fleet Productivity Work Input. When the Fleet Productivity function of Vehicle Manager is enabled, use P/N 89968 and insert the pin labelled DCM into cavity 7 on the 12-pin connector. Fleet Productivity defines work as follows:

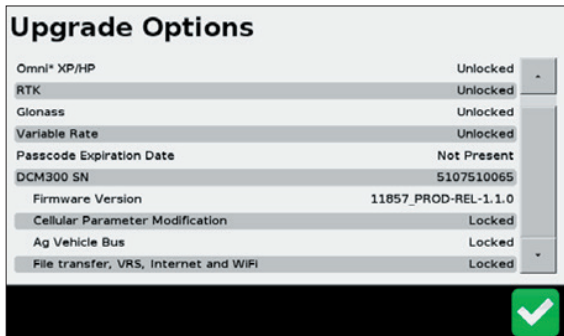
Working state	System working	System not working
High	Switch open	Switch closed
Low	Switch closed	Switch open

Optional - For connection to the R-terminal on the alternator if engine hours are not available on the CAN. Insert the pin labeled DCM into cavity 4 on the 12-pin connector.

P/N 90147 has an additional R4 connector for the NavController II.




To use VRS™ corrections, unlock the File Transfer, VRS, Internet, and WiFi options:

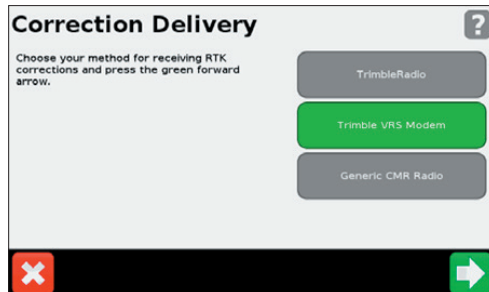


Note – You can enter an option code from the CFX-750 display's Unlock/Upgrade menu.

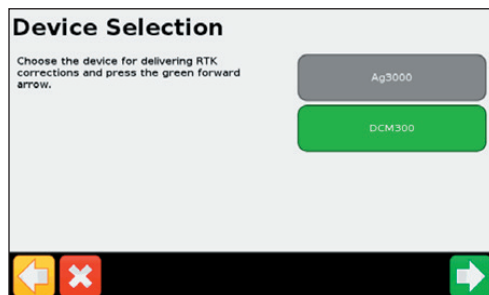
Configuring the display for VRS corrections

Note – To use the VRS correction service, the display must be unlocked for RTK.

1. To access the GPS Setup screens, tap  and then select GPS / GPS Setup / GPS Correction Source / RTK:



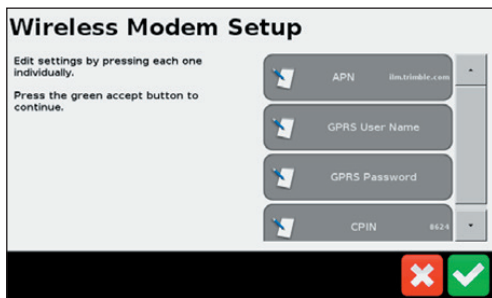
2. Select the option for *Trimble VRS Modem* and then tap :



3. From the device selection list, select the required Trimble modem option.

Configuring VRS settings

1. Connect the modem and turn it on.
2. Select the DCM-300 modem and then follow the on-screen instructions. The first step in the VRS setup wizard is Wireless Modem Setup. This is required only for DCM-300 modems where you have installed a SIM card not provided by Trimble:

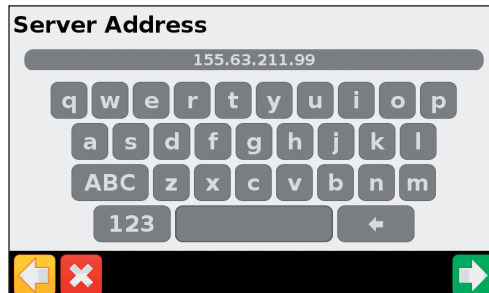


3. Wireless Modem settings

Note: The SIM card provider is responsible for providing any settings required.

Setting	Description
APN	Mobile network access point name, usually required by the network.
GPRS User Name	Mobile network user name. This is optional - check with your mobile network if this setting is required.
GPRS Password	Mobile network password. This is optional - check with your mobile network if this setting is required.
CPIN	SIM PIN. This is an optional password lock to restrict use of the SIM card.

4. The following steps in the wizard guide you through entering VRS settings provided by the CenterPoint™ or Network RTK provider:



The required settings are as follows:

Setting	Description
Server Name / Address	RTK / VRS / CORS base station broadcast name
Server Port Number	Server Port Number
Mount Point	Base station mount point
VRS User Name	Network assigned user name
VRS Password	Network assigned password




DCM-300 Modem with Correction Services and the CFX-750™ Display

Quick Reference Card

Once the wizard is completed, a screen shows the VRS connection status, and shows all the settings entered:

VRS Status ?

Connection	Logged in
Server Address	155.63.211.99
Port Number	2170
Mount Point	TVN_AG_GNSS
VRS User Name	Ag_PPGn4
VRS Password	ppgn4
Device Name	DCM300
Serial Number	5051593879
Firmware Version	1.1.0

The VRS status message types are as follows:

VRS connection status	Description
Logged In	VRS Connected
Connecting	Mobile Network Searching
Disconnected	Mobile Network No Service



P/N 83400-02-ENG-B

© 2014, Trimble Navigation Limited. All rights reserved. Trimble and the Globe and Triangle logo are trademarks of Trimble Navigation Limited, registered in the United States and in other countries. Centerpoint, Centerpoint, CFX-750, and VRS are trademarks of Trimble Navigation Limited. Version 5.00, Rev B (May 2014).